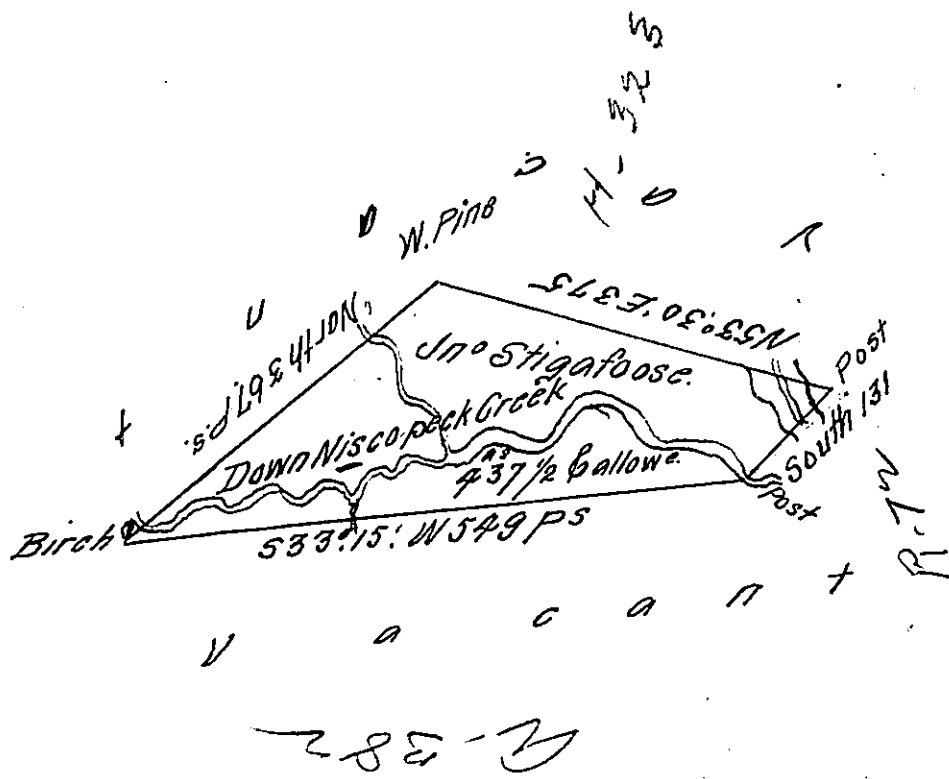


Butler
Luzerne!



A Draft of a tract of land Called the Meadow farm Situate on Mescop-
 peck Creek about two Miles below the Fort allen old path including
 a piece of Clear Bottom on the Creek in Luzerne (Late North obl.)
 four Hundred & thirty Seven acres $\frac{1}{2}$ & allowance of Six & Cent for
 Roads &c Surveyed for John Stigafoose the 19th Day of June 1790 in
 Pursuance of a Warrant dated the 1st Day of July 1789.

Daniel Brodhead Esq^r }
 Surv^r Gen!

by W^m Gray D.S.
 ——— " ———

IN TESTIMONY that the above is a copy of the original remaining on file in
 the Department of Internal Affairs of Pennsylvania, made
 conformably to an Act of Assembly approved the 16th day of
 February, 1833, I have hereunto set my Hand and caused
 the Seal of said Department to be affixed at Harrisburg,
 this Second day of November 1911

Henry Howell
 Secretary of Internal Affairs.